



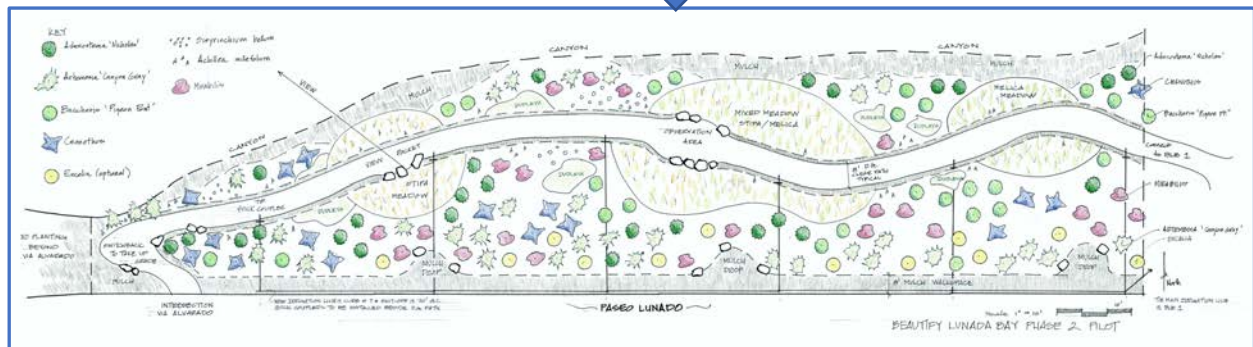
BEAUTIFY LUNADA BAY PROJECT

NEWSLETTER #13

July 2021

Volunteers Complete Stone Borders of Trail

Volunteers have completed installation of the stones lining the trail bed on Phase 2 of the Lunada Bay Homeowners Association's (LBHOA's) Beautify Lunada Bay project. The trail connects to the existing trail on Phase 1B across from Lunada Bay Elementary School and follows the winding path shown in the illustration to the intersection of Via Alvarado. The oleander bush has been removed.



Finley's Tree & Landcare graded the trail bed and also installed a water line with hose connectors adjacent to the trail bed. Hoping for rain, we will delay planting of low-growing, drought-tolerant plants until Fall of this year and will supplement rains with hand watering as necessary.

As noted in our last newsletter, most of the stones used to line the trail were collected during Saturday volunteer days at the City's rock pile. Additional stones were provided by a local homeowner. Fortunately, student members of Palos Verdes High School's Lacrosse and Swim teams provided much of the muscle required to move the major rocks along the trail.

Other major contributors to the trail-lining effort were community members, volunteers solicited by the Palos Verdes Peninsula Land Conservancy, and scouts from Scouts BSA Troop 258.

Troop 258 leader Sheryl Brannan said of the experience, “The girls from Scouts BSA Troop 258 had a great time volunteering with Beautify Lunada Bay. After roasting marshmallows over a campfire, an evening sleeping under the stars, and cooking breakfast and lunch outdoors, these helpful scouts decided to do their “good turn daily” together by shoring up the new walking path and helping to maintain the landscaped area across from LBE.” These girls are members of the first all-female BSA troop in PV and many of them hope to earn their Eagle Scout award in the future.



Above: Left, Scouts working on trail; right, the group after an afternoon’s work.



Volunteers gather at the end of the completed trail at its intersection with Paseo Del Mar.

The BLB team sincerely appreciates the help Troop 258 and all of our volunteers have provided to our trail-building effort. Their efforts have created the artfully-laid trail boundary you can see now. Walk the trail and take a look.



The lined trail.

Next Steps

The next step in the project is to install the decomposed granite trail bed, and once we have funding in place, Finley's will return and complete that task. The LBHOA has submitted an application to the new Palos Verdes Estates Foundation for a grant to cover costs of the DG and its installation.

Speaking of funding, the entire BLB project has been funded by grants from the South Coast Chapter of the California Native Plant Society, Palos Verdes Homes Association, Lunada Bay Homeowners Association, Lunada Bay Elementary School PTA and National Geographic Society plus donations from community members. The City of Palos Verdes Estates has provided stones and the labor to deliver stones to the BLB site and continues to provide water and mulch for the project. No city funding was provided for this project.

Volunteer Opportunities

Contact beautifylunadabay@lbhoa.org if you're interested in getting involved.

----- Background -----

The Lunada Bay Homeowners Association (LBHOA) initiated the Beautify Lunada Bay (BLB) Project in 2014 to restore the habitat and improve the appearance of public areas.

Phase 1 of the project began in late 2017 as dozens of volunteers, ranging from science students to senior citizens, laid the groundwork for new pathways on the north side of Agua Amarga Canyon. The first half of Phase 1 broke ground early in 2018 with installation of the pathway and native plants on the north side of Agua Amarga Canyon. Work on the second half, the south side of Agua Amarga Canyon (across from Lunada Bay Elementary School), began in March and was completed in the Summer of 2018. Phase 2 of the project began in 2020.

The BLB Project is a joint effort of the LBHOA, the City of Palos Verdes Estates (PVE), and the Palos Verdes Peninsula Land Conservancy (PVPLC). Please see the LBHOA web page (<http://beautifylunadabay.lbhoa.org>) for past newsletters and more information.

-----**BLB Phase 2 Steering Committee**-----

Bill Ailor, Project Leader; LBHOA Board

Barbara Ailor, Volunteer

Marlene Breene, LBHOA Board, Landscape Design

Ed Deason, LBHOA Board

Jeff Hu, LBHOA Board

Karen Merickel, PVE Resident

Kristin Sweet-Pekarek, President, LBHOA

Megan Wolff, PVPLC

Cynthia Woo, Volunteer