



## BEAUTIFY LUNADA BAY PROJECT

# NEWSLETTER #7

July 2018

### The Pilot Is Completed!

Thanks to the help of many volunteers, funding from donors, grants from National Geographic, the South Coast Chapter of the California Native Plant Society, the Lunada Bay Elementary School PTA, and the Palos Verdes Homes Association, plus donations of stones, boulders, mulch and water by the City of Palos Verdes Estates, and project management and volunteer coordination assistance by the Palos Verdes Peninsula Land Conservancy, the Beautify Lunada Bay Pilot Project is **FINISHED!** Drive by, walk the trails, sit on a boulder, and enjoy the drought-tolerant native plants that are now blooming.

The project was broken into two phases: Phase 1a, which installed trails and native plants on the north side of the Lunada canyon, and Phase 1b, which upgraded the south side. On Phase 1a, a hired contractor did most of the work, with volunteers used only to cover the site with mulch after the plants were planted. To reduce costs and incorporating lessons learned from Phase 1a, volunteers on Phase 1b built stone borders for trails, planted plants, installed the final drip water lines, and covered the site with mulch.

A photographic chronology for completion of the Phase 1b part of the effort follows:

In the photo below, BLB volunteers Bill Ailor (foreground), Marlene Breene (landscape designer for the project), and Peter Bena take measurements on the south side of Lunada Canyon and begin to lay out trails. The photo also shows the initial condition of the site.



Shortly after this, Palos Verdes High School students collected information on the plants and other life forms prior to the restoration effort (see photo below). The students will continue to collect information

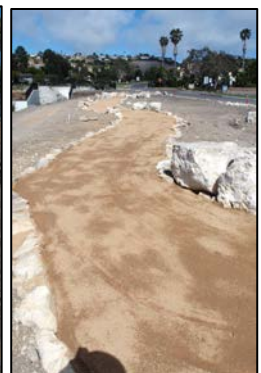
as the native plants mature. Their project will track the return of insects, birds, and other wildlife to the site.



After our contractor, Finley's, cleared the site and installed the main water lines for the drip water system, volunteers spent several weekends using the city-supplied stones to line the trails (Finley's placed the large boulders for the outdoor classroom area).



The left photo shows the final trails; the right shows a few of the hardy souls who placed the stones (note the well-developed arms).



Finley's team then returned and installed the decomposed granite (DG) trail bed: left photo, DG being compacted; center, second DG coat ready for compaction; right, after soaking to set adhesive.

At that point, volunteers returned to dig over 600 holes for the plants. The plants were grown for the project by the Palos Verdes Peninsula Land Conservancy. The PVPLC also provided guidance on locally-native plants to be used and was the primary interface with our contractor.



BLB Project leaders then trained volunteers on the task ahead (top left, Peter Bena trains volunteers) and they began digging and planting.



After holes were dug, each was filled with water to make the new homes more hospitable for the new residents. When the water was absorbed, a plant food pellet was dropped into the hole and plants were placed. A stone ring was put around each plant to hold water and the area was flooded again.

The next step was to install the drip water lines with two drip emitters assigned to each plant, followed by covering the bare ground around each plant with wood mulch provided by the City. After several days of heavy work by volunteers, the project was completed (photos below show results).



And the weeding begins (below, volunteer Cynthia Woo weeds away).



The work on the south (school) side of the canyon includes three features designed to reduce the weeding effort for the first year. First, a bio-degradable craft-paper barrier was placed over about a third of the site after the irrigation lines were installed and before the mulch was put on top. The hope is that the barrier will slow weed growth and give the new natives an opportunity to achieve a good hold. Second, the drip lines emitted water only near the plants, not every 18 inches as on the north side of the canyon. And third, a heavy layer of mulch (~3-4 inches thick) was installed. We'll see how these features work as the habitat matures.

## So, What's Next?

- We're planning an event on between 4 and 6 PM on Sunday, July 15 on the Phase 1b site to thank key volunteers and supporters and celebrate the completion of the pilot project. Refreshment will be served.
- We'll continue to have periodic weeding events, which will be posted on the PVPLC's Volunteer Hub web page. We'll also send notices to our BLB email list. If you're not on that list, you may sign up at [blb.lbhoa.org](http://blb.lbhoa.org).

The BLB Pilot Project demonstrates a concept for restoring deteriorated open space. With ongoing support, we will continue community discussions, prepare plans, obtain permissions, secure funding, provide volunteer opportunities, and improve Lunada Bay.

Please give us your thoughts on moving forward via the BLB web page: [blb.lbhoa.org](http://blb.lbhoa.org)

## ----- **Background** -----

*The Lunada Bay Homeowners Association initiated the Beautify Lunada Bay (BLB) Project in 2014 to restore the habitat and improve the appearance of areas in Lunada Bay. The project will replace the seasonal weeds or bare dirt with drought tolerant native plants that will remain less than three feet tall and be attractive year-round. The project will also upgrade existing walking paths by adding stone borders and decomposed granite.*

*After meetings with local residents, BLB planners developed plans for Phase 1 of the effort: a*

*demonstration garden on a 1-acre site across from Lunada Bay Elementary School. Plans for the site were developed in concert with the Palos Verdes Peninsula Land Conservancy (PVPLC), a local nonprofit organization that grows native plants and restores open space on the Peninsula.*

*The City of Palos Verdes Estates gave its enthusiastic support and is providing boulders, stones to line the paths, mulch, and water for three years to assure the plants get a good start. Please see the LBHOA web page ([blb.lbhoa.org](http://blb.lbhoa.org)) for more information.*

## ----- **BLB Steering Committee** -----

Bill Ailor, Project Leader; VP, LBHOA Board  
Barbara Ailor, Resident  
Peter Bena, LBHOA Board, Project Management  
Jane Biggeln, Resident  
Marlene Breene, LBHOA Board, Landscape Design  
Christi Carrillo, Palm Realty Boutique  
Kapil Dheeriya, PVHS Student  
Brittany Goldsmith, Palos Verdes Peninsula Land Conservancy

Karen Merickel, Resident  
Adrienne Mohan, Palos Verdes Peninsula Land Conservancy  
Austin Nash, PVHS Student  
Connie Smith, Resident  
Kristin Sweet-Pekarek, President, Lunada Bay Homeowners Association (LBHOA)  
Robert Wynne, LBHOA Board