

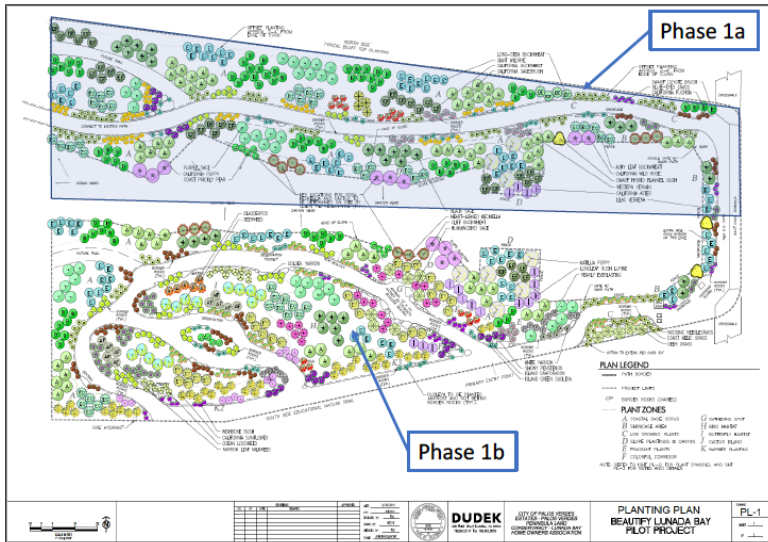


BEAUTIFY LUNADA BAY PROJECT

Sponsored by the Lunada Bay Homeowners Association

Dear Lunada Bay Resident,

As the plot plan shows, we're on track to finish Phase 1a of the Beautify Lunada Bay pilot area by the end of this calendar year, and with your help, work on Phase 1b will begin early in 2018.



As the plot plan shows (see blb.lbhoa.org for better detail), Phase 1b will include installation of the outdoor classroom areas for use by students at Lunada Bay Elementary. The outdoor classrooms are actually two wide areas of the walking paths that include small boulders where the children can sit and learn about the natural environment around them.

As part of the overall BLB educational plan, a naturalist's handbook is being developed that will follow the evolution of the interdependent relationships in ecosystems that will develop and mature in the in BLB laboratory garden. The handbook is based on California's Next Generation Life Science and Earth Science Standards for 5th Grade.

In addition to the elementary school children, students at Palos Verdes High School (PVHS) are already collecting information along transects in the Phase 1b area that will become the outdoor classroom. These and future students will periodically revisit and collect data along the same transects. Their work will provide a measure of environmental quality as birds, butterflies, and the general nature of the area changes with time.

As you can see, this small project will have great educational value.

We are now raising funds to complete the project. Funds will be used to:

- Scrape the site of invasive weeds, which will minimize, but not eliminate, the need for periodic weeding (given the environmental significance of the site and the proximity to the school, we don't want to use chemical weed inhibitors).
- Install the main water line and temporary sprinklers that will help new, native plants adapt and take hold (the plants are drought-tolerant, and watering is needed for three years).
- Install rock border and small seat boulders for outdoor classrooms.

At this early date, over 50 PVHS students and numerous adults have signed up to help weed, build the walking paths, and provide other assistance as the project moves forward.

This support is evidence that the BLB project has the potential to be an ongoing effort where community members can contribute time and resources both for the physical enhancement of our community and for the educational development of our children.

As the year ends, please consider a tax-deductible donation to the Beautify Lunada Bay project by contributing to the Palos Verdes Peninsula Land Conservancy (www.pvplc.org) and *earmarking your donation "For BLB."*

Many thanks for your consideration. Best wishes for a great holiday season.

Best regards,

Bill Ailor, BLB Project Leader