



BEAUTIFY LUNADA BAY PROJECT

NEWSLETTER

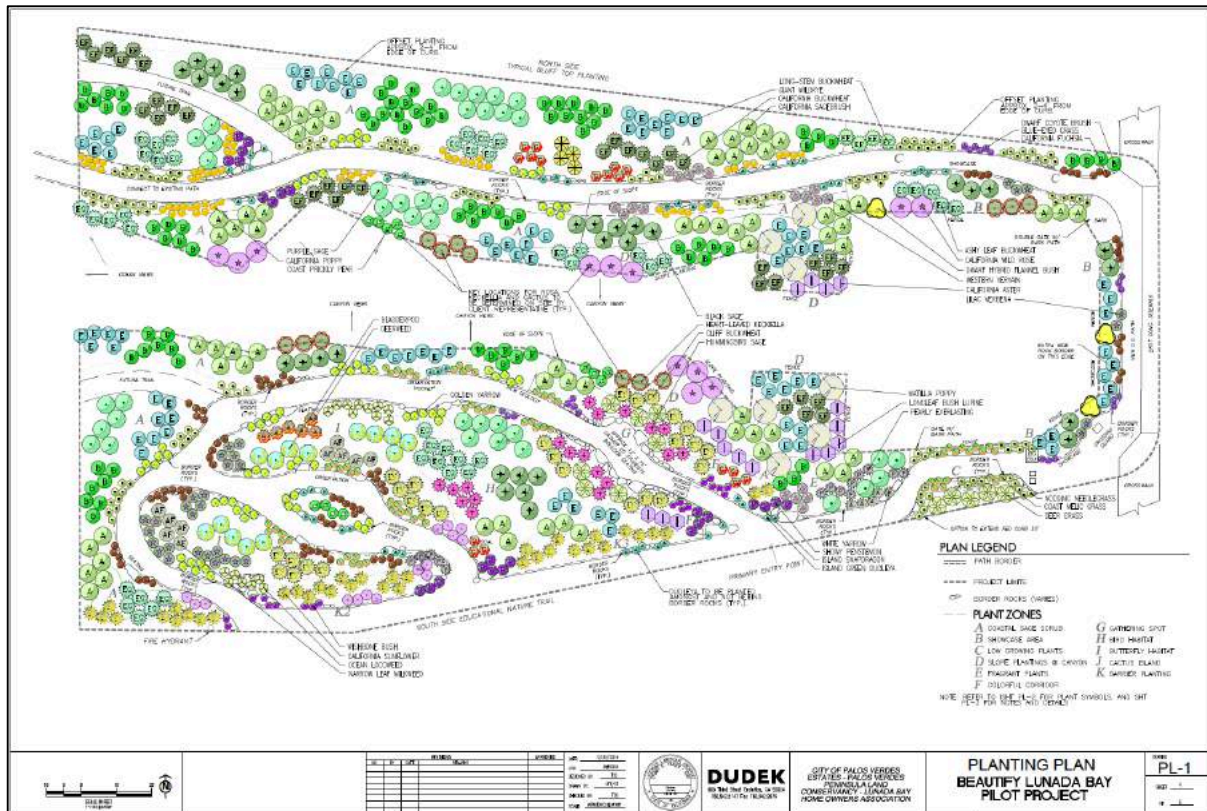
July 2017

Background

The Lunada Bay Homeowners Association initiated the Beautify Lunada Bay (BLB) Project three years ago to improve the appearance of areas in Lunada Bay that have suffered from benign neglect over the years: in particular, our bluff-tops. The project will replace the seasonal weeds or bare dirt with drought tolerant native plants that will remain less than three feet tall and are attractive year-round, and to add or delineate existing trails with stone-lined, decomposed granite walking paths.

After meetings with local residents, BLB planners developed Phase 1 of the effort at a 1-acre site across from Lunada Bay Elementary School. Plans for that site were developed in concert with the Palos Verdes Peninsula Land Conservancy (PVPLC), a local nonprofit organization that grows native plants and has restored many acres of open space on the Peninsula.

The City of Palos Verdes Estates gave its enthusiastic support for this plan (see below) and will provide boulders, stones to line the paths, mulch, and water for three years to assure the plants get a good start. Please see the LBHOA web page if you'd like more information.



Recent Activities

Plants Growing at Land Conservancy Nursery



Funds donated to date have enabled the Palos Verdes Peninsula Land Conservancy to grow over 1,000 locally native, drought tolerant, low-growing plants for Phase 1. Plants will be ready for planting in late November/early December of this year.

Thinking of volunteering? This might be a good time and project.

Plants for BLB growing at PVPLC Nursery

Coming Out Event Informs Residents



The Steering Committee held a successful “coming out” event at the Phase 1 site on April 22, 2017. Sharing coffee, donuts, and juice with people who dropped by our booth across from Lunada Bay Elementary School, BLB collected contact information from over 30 individuals and families asking how they can help and to be kept informed.

Volunteers and visitors at the coming out event.

Booth Hosted at Lunada Bay Spring Festival



The Steering Committee hosted a booth at the Lunada Bay Spring Festival event on Sunday, April 30, with information on our plans for enhancing the bluff-top areas with walking paths and native plants with individuals and families expressing their willingness to volunteer and donate funds. A student at Palos Verdes High School suggested that he and fellow students might be great volunteers for weeding and building walking paths as the project moves along.

Bill Ailor presents plan for Phase 1.

Schedule Developed for Phase 1 Pilot

The BLB Steering Committee has developed an aggressive schedule (see below) for completing the installation of the boulders, temporary watering system, stone-lined walking path, and plants at the 1-acre site by the end of 2017. It is essential that work on the boulders, watering system and walking path be completed by November 1 to be ready to plant the plants.

TASK	March	April	May	June	July	August	Sept	October	Nov	Dec
Plants										
Growing	1 (PVPLC)									
Planting										
Mulch										
Initial Site Preparation										
Mowing (schedule by PVE)										
Select Contractor										
Walking Path										
Layout										
Installation										
Boulder										
Locations										
Installation										
Sprinkler System										
Layout										
Mainline Installation										
Drip system installation										

KEY: Preparations
Major Actions

BLB Phase 1 Schedule

Get Involved...

If you'd like to help us make our bluff tops beautiful, there are two ways you can help:

- 1) **Become a volunteer.** Major volunteer activities will include:
 - a. Weeding: We'll need volunteers to weed before, during and after planting activities. Like to weed? We've got weeds!
 - b. Building walking paths: Want to build muscles? Help us line our walking paths with stones. Why go to a gym when you can work outdoors with clean air and sunshine (most of the time)?
 - c. Planting plants: In the December time frame, we have about 1,000 plants to put in the ground. Like to work on your own landscaping? Come help us bring flowers, butterflies, and birds to our open space.

- 2) **Provide financial support.** Funding from the community is required to support this project. To date, over \$17,400 has been donated by members of our local community, and most of these funds have been used to develop the plan for the site and to begin growing the plants. We need to raise at least \$60,000 more to complete Phase 1 (i.e., place boulders, complete the watering system, and complete the walking paths—all of which must be completed before November). Any additional funds raised will help us move forward aggressively on the next phase of the project, which will move us toward the bluff tops. Donations may be made at any time by visiting the Palos Verdes Peninsula Land Conservancy's web site (www.pvplc.org) and including a note with your contribution that it should be used for the BLB Project. All donations are tax-deductible.

Coming Events

There will be special fundraising event hosted by a resident adjacent to Lunada Canyon in early Fall. Please email BeautifyLunadaBay@LBHOA.org if you have questions and/or would like to have your name added to the invite list. We'll provide more information as we get closer to September.

BLB Steering Committee

Bill Ailor, Chair, Beautify Lunada Bay Project, LBHOA Board
Peter Bena, President, Lunada Bay Homeowners Association (LBHOA)
Marlene Breene, LBHOA Board
Reggie Jue, LBHOA Board
Adrienne Mohan, Palos Verdes Peninsula Land Conservancy
Carl Moritz, City of Palos Verdes Estates, Urban Forester
Bob Stantley, LBHOA Board
Kristin Sweet, LBHOA Board